

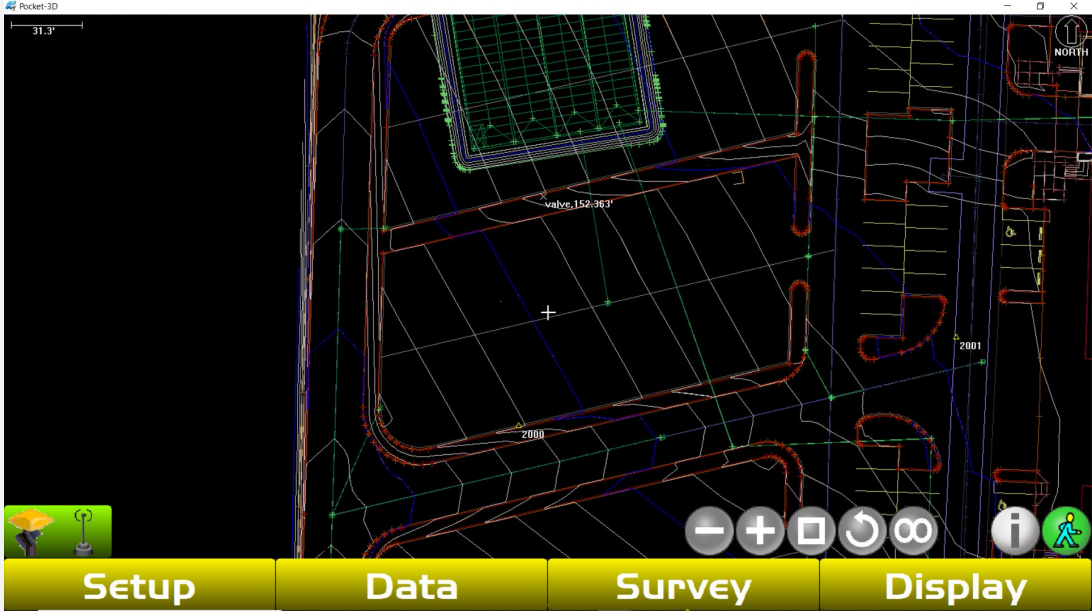


QuickCodes

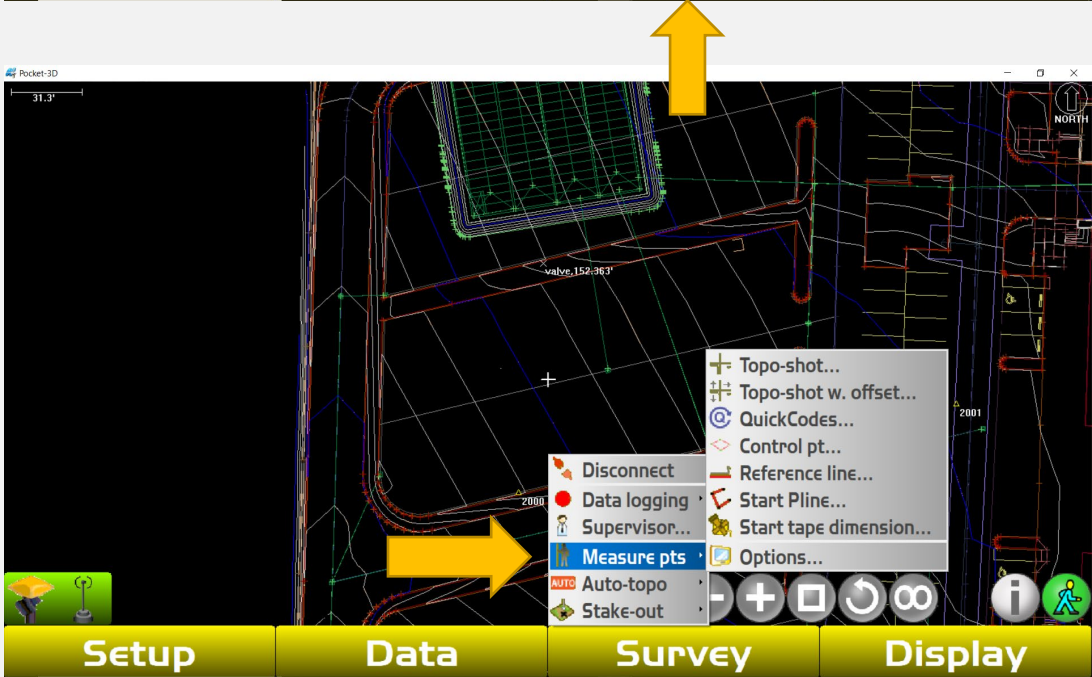
Creating Screen Shortcuts for Quick
Topo Shots or Capturing Points



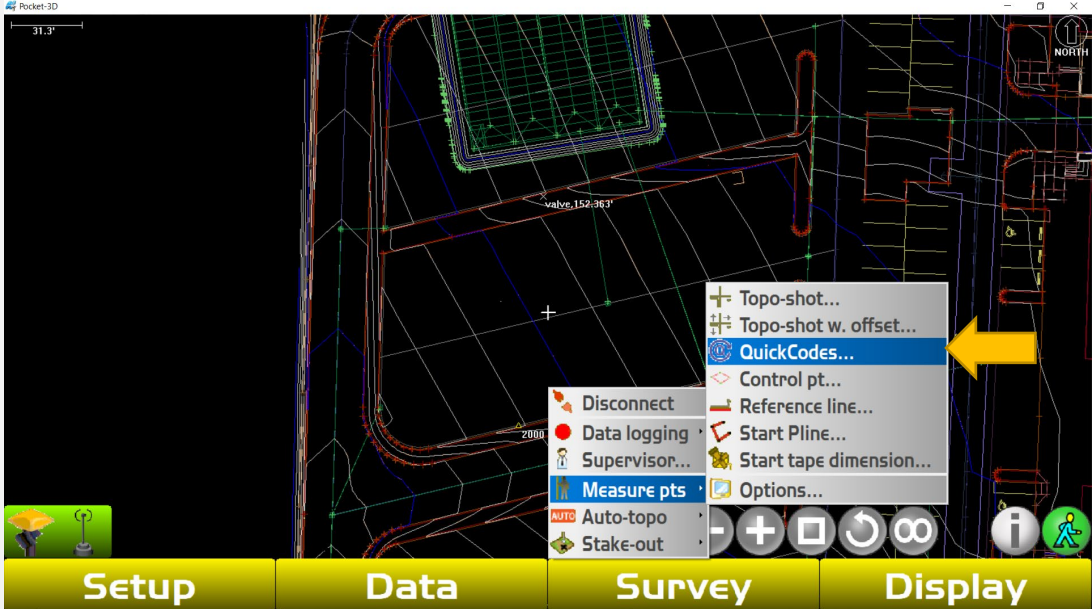
Select the "Survey" tab



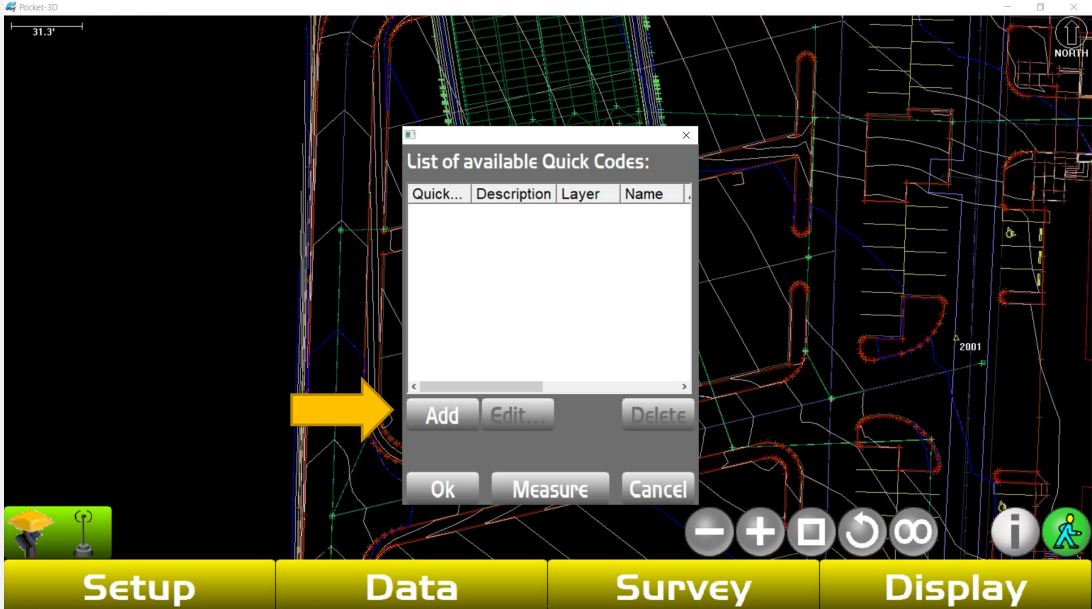
Click "Measure pts"



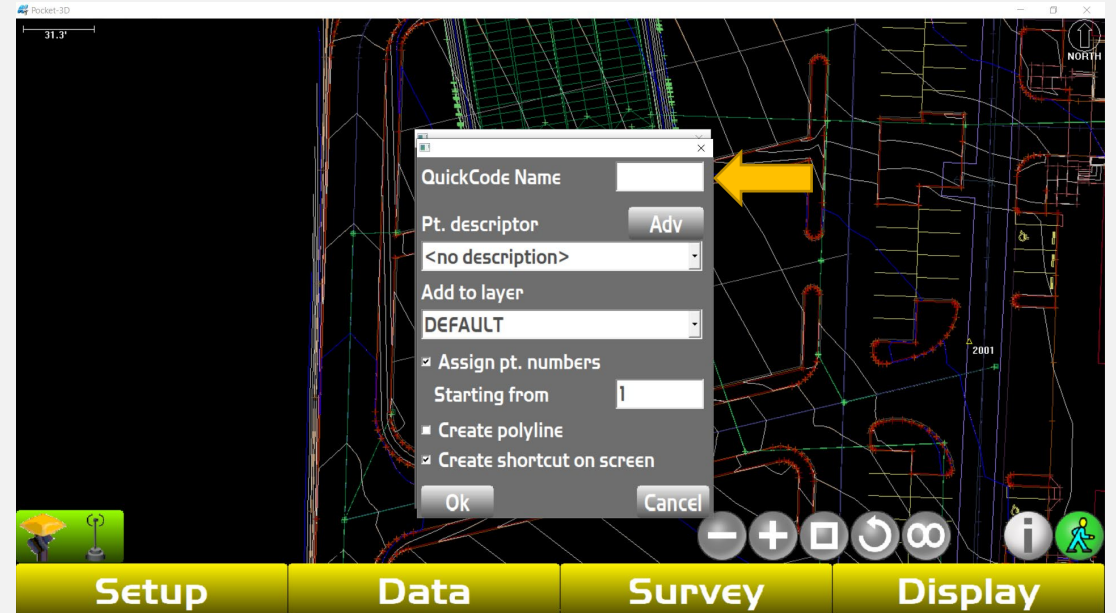
Click "QuickCodes"



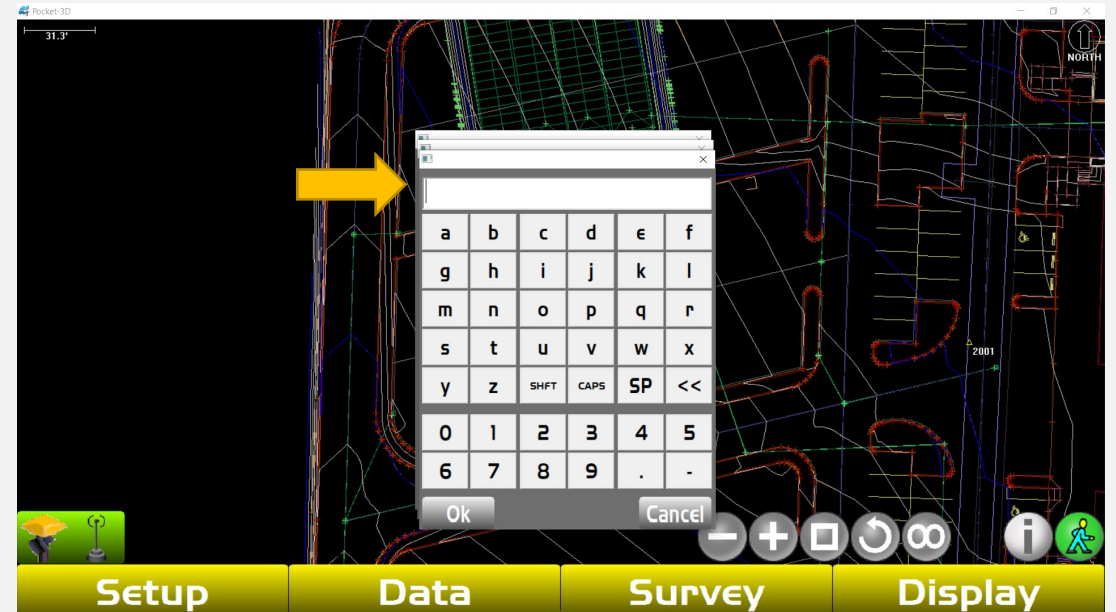
Click "Add"



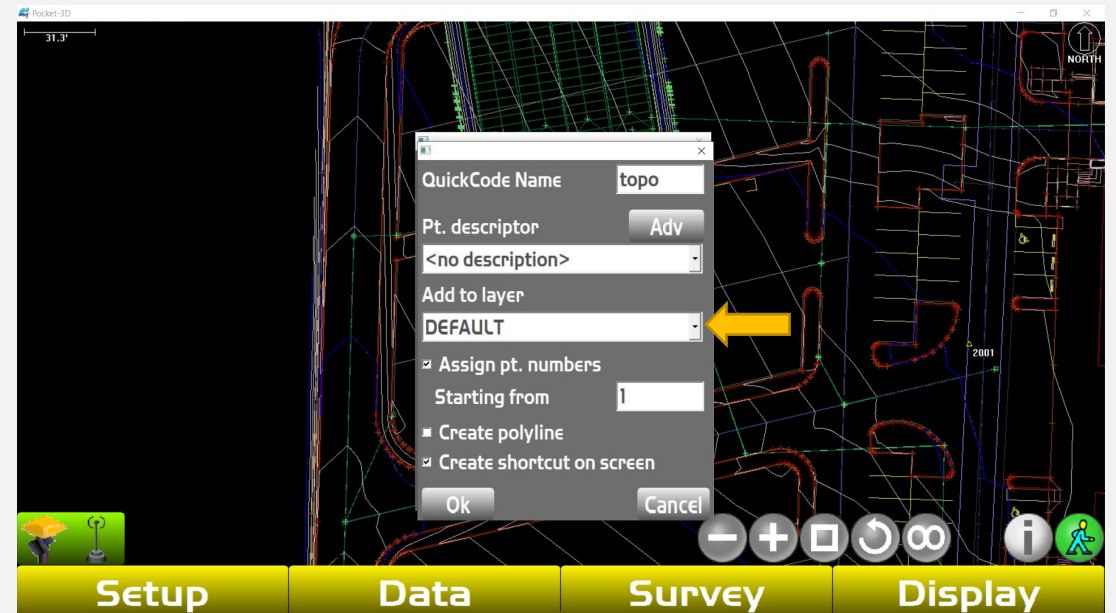
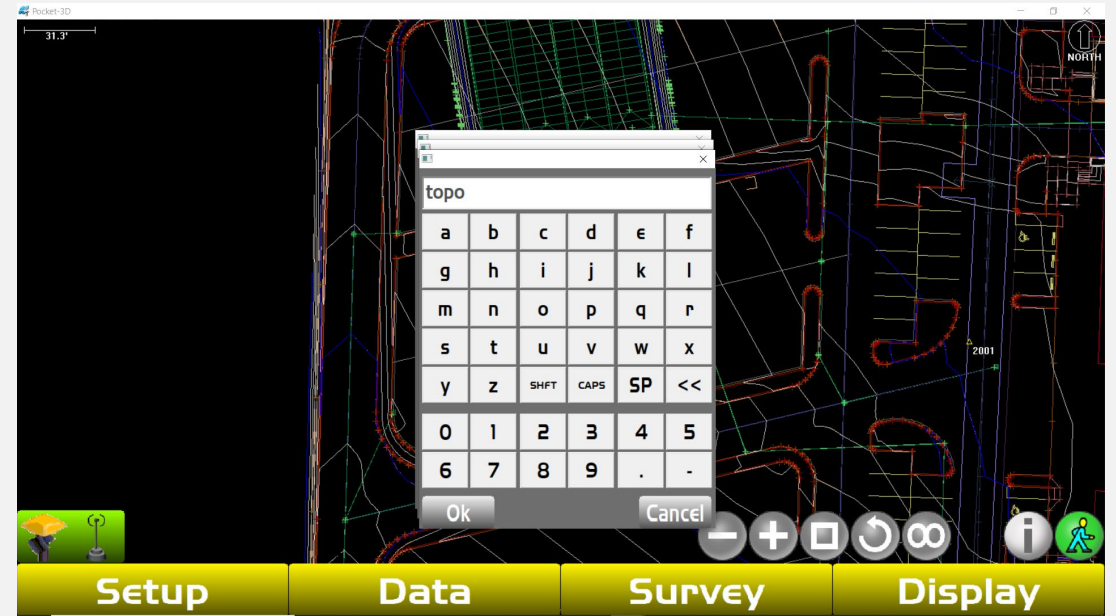
**Click on the
QuickCode Name field**



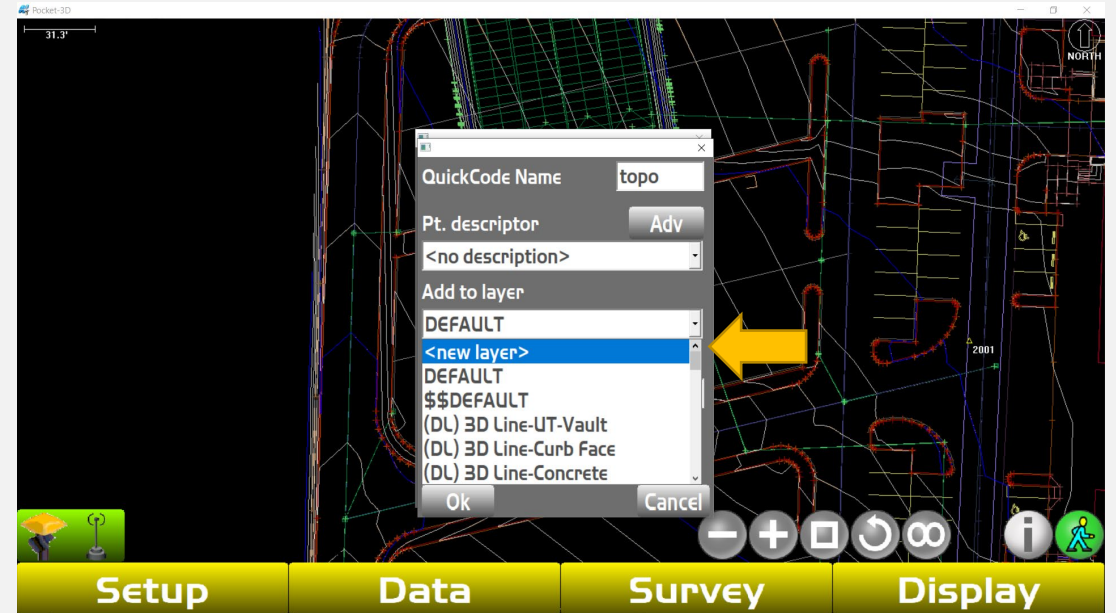
**Give your shortcut
a title**



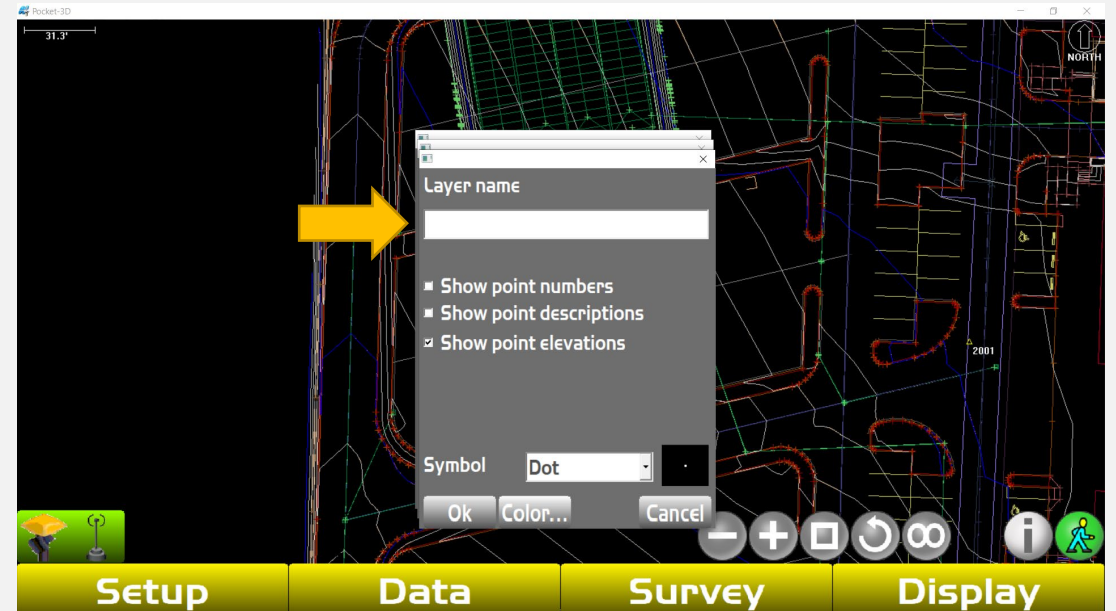
Now that you have titled your shortcut, click on the “Add to layer” drop down



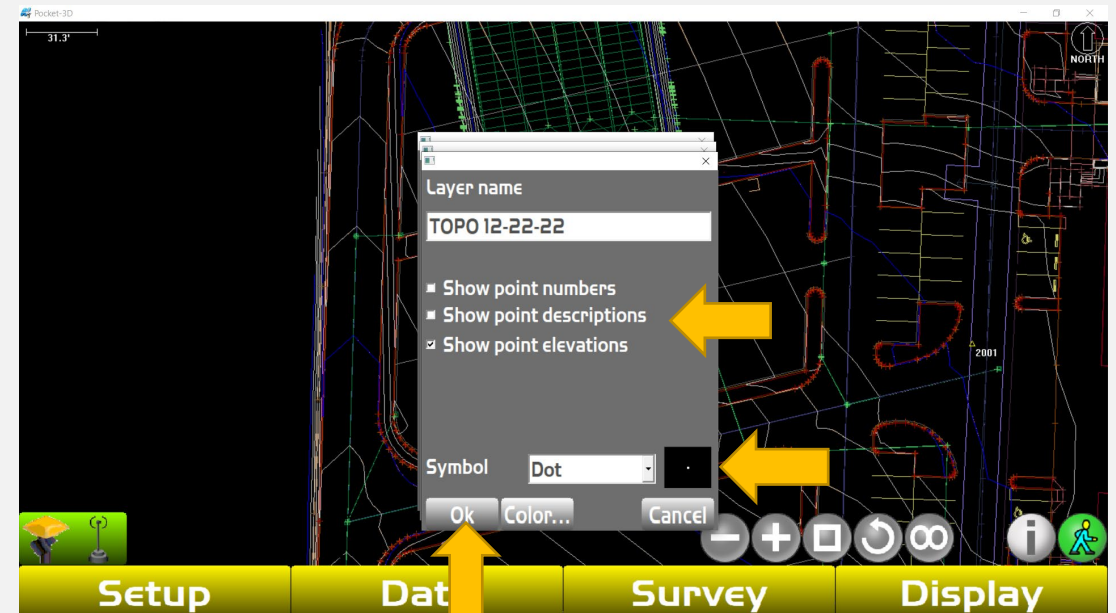
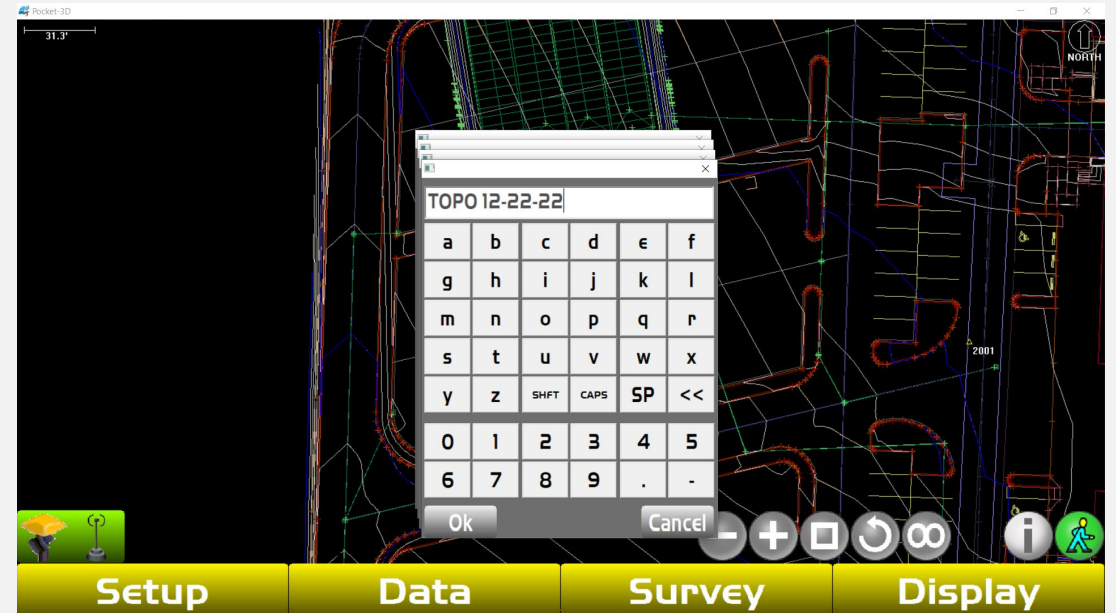
Either select an existing layer or create a new layer for your point to be saved to



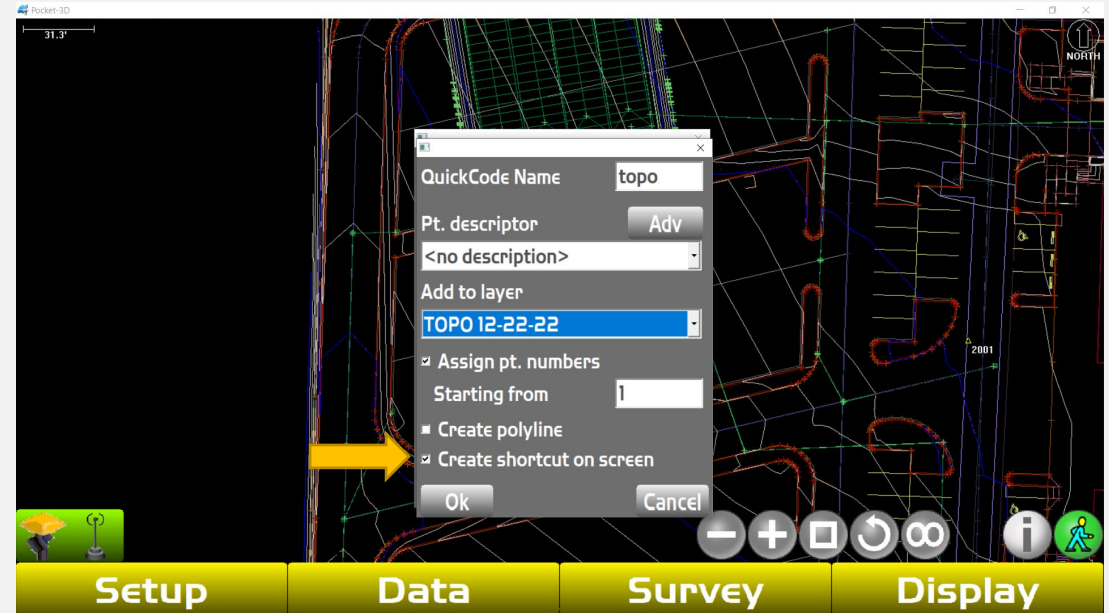
If you are creating a new layer, title the layer



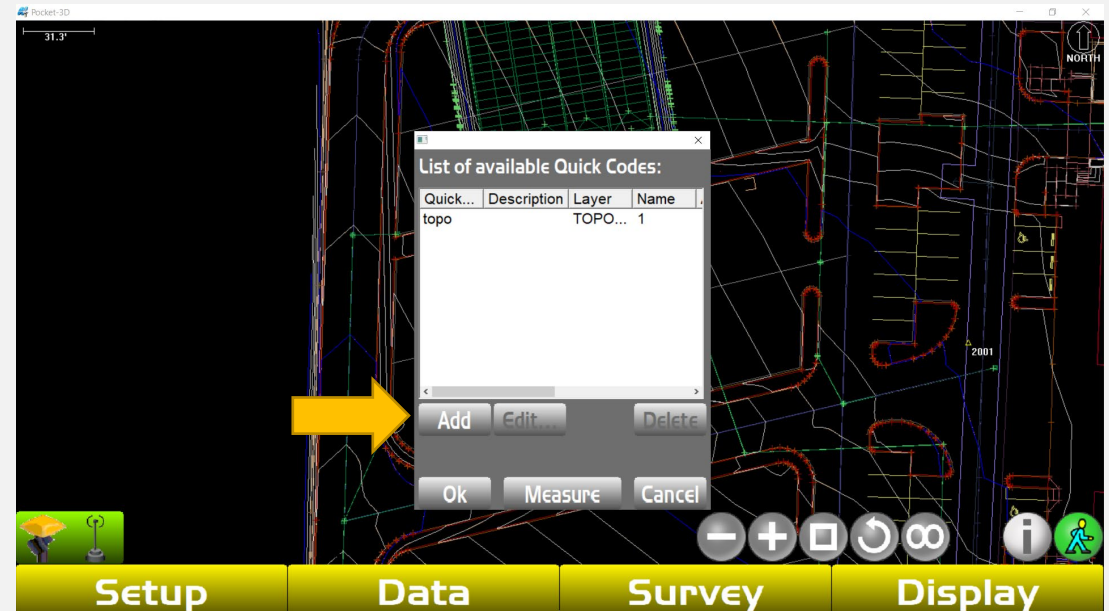
**Once the layer is titled,
click what info you want
displayed for your shot
and which symbol then
click "OK"**



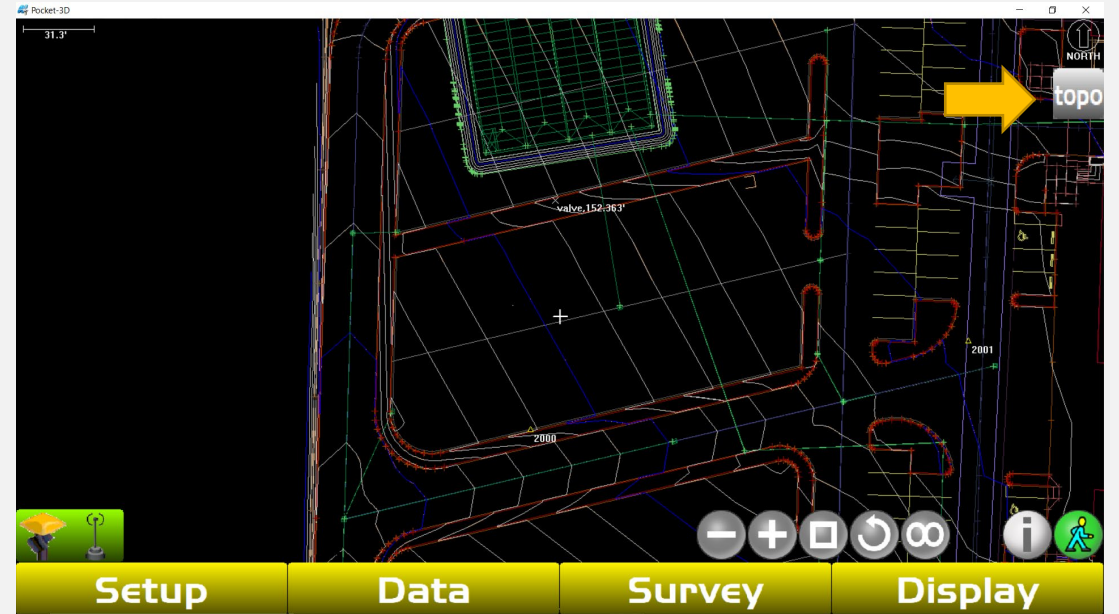
Check the box that says
"Create shortcut on screen"
screen the click "OK"



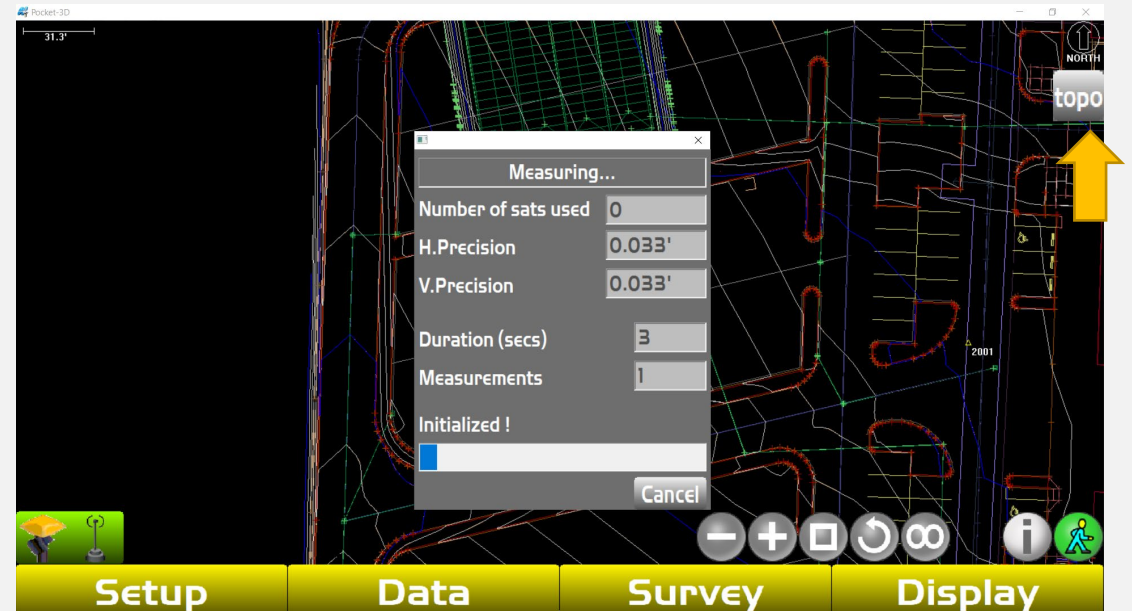
Click "OK"



Your shortcut will now appear on the upper lefthand corner of the screen



Simply click the QuickCode shortcut for topo shots





Link to Training Videos:

<https://www.youtube.com/@northwestconstruction>