

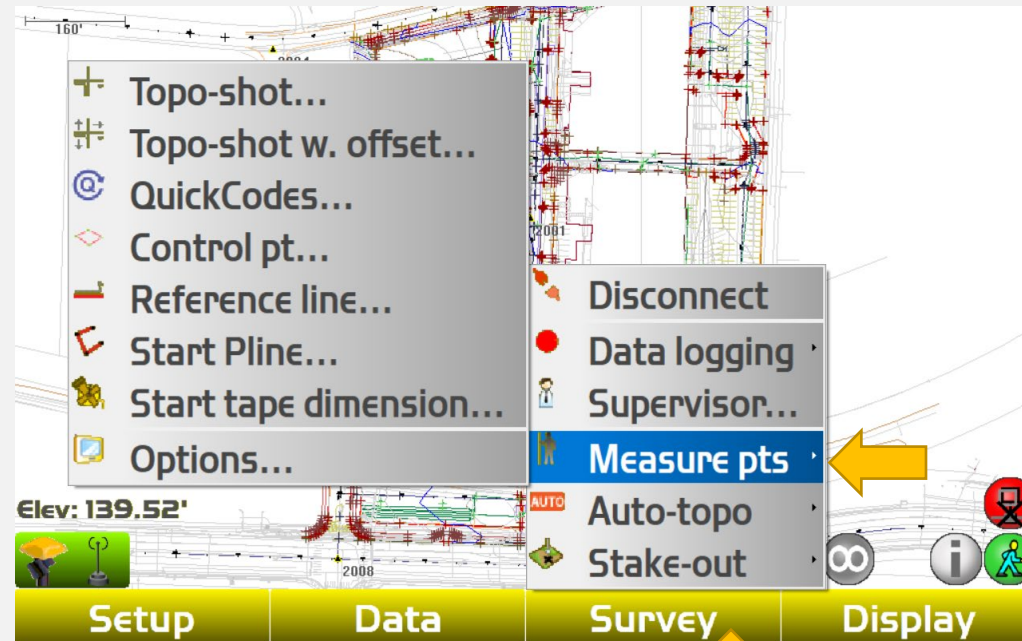


Measuring Points

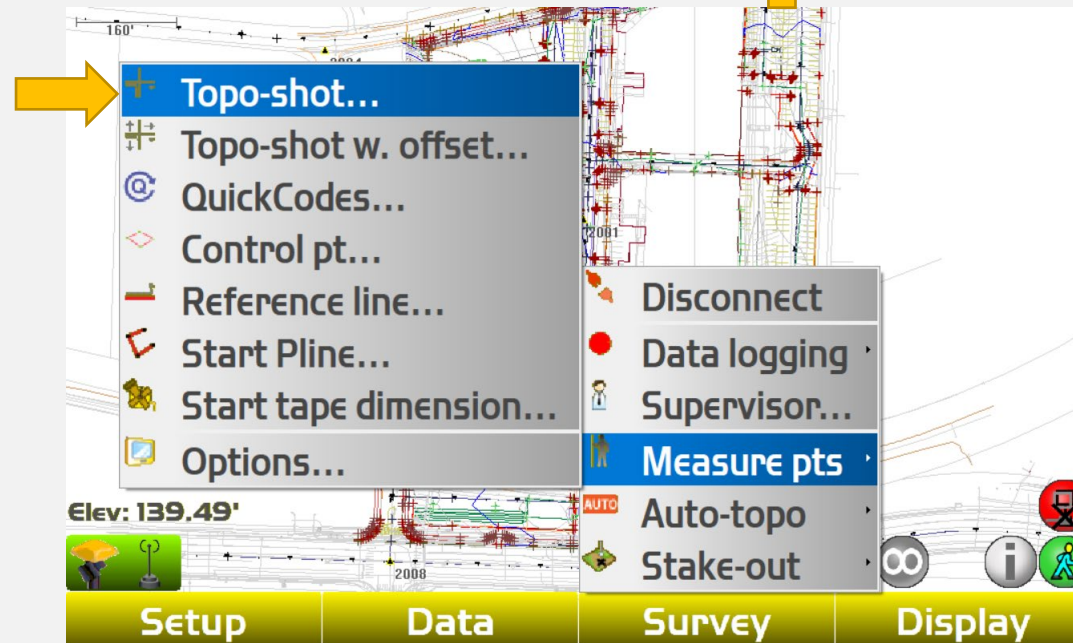
Saving and Organizing Topo Shots



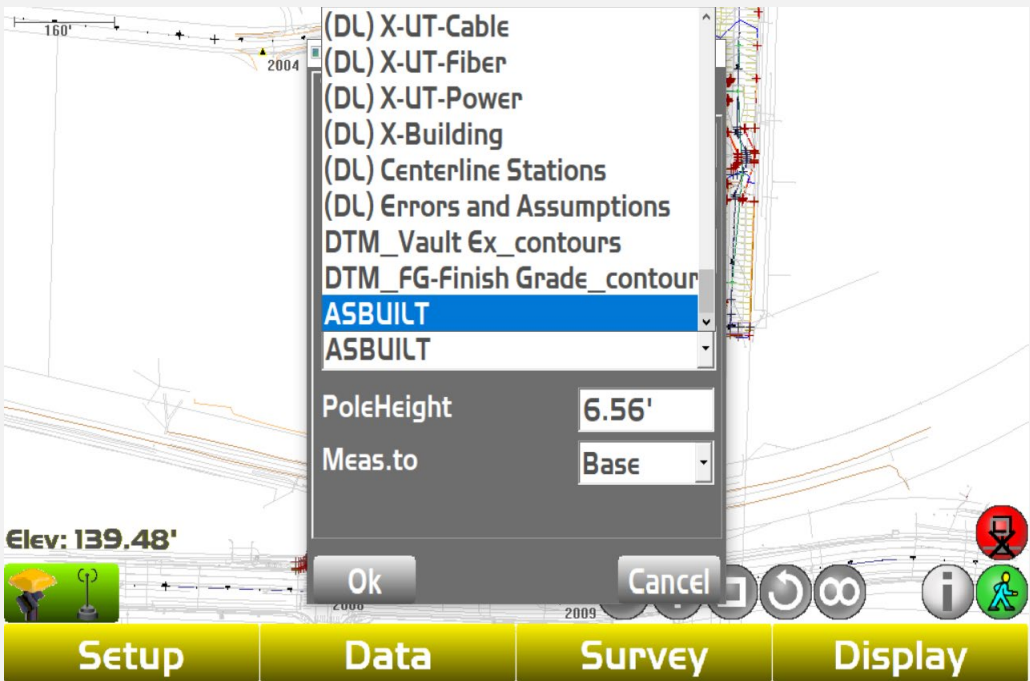
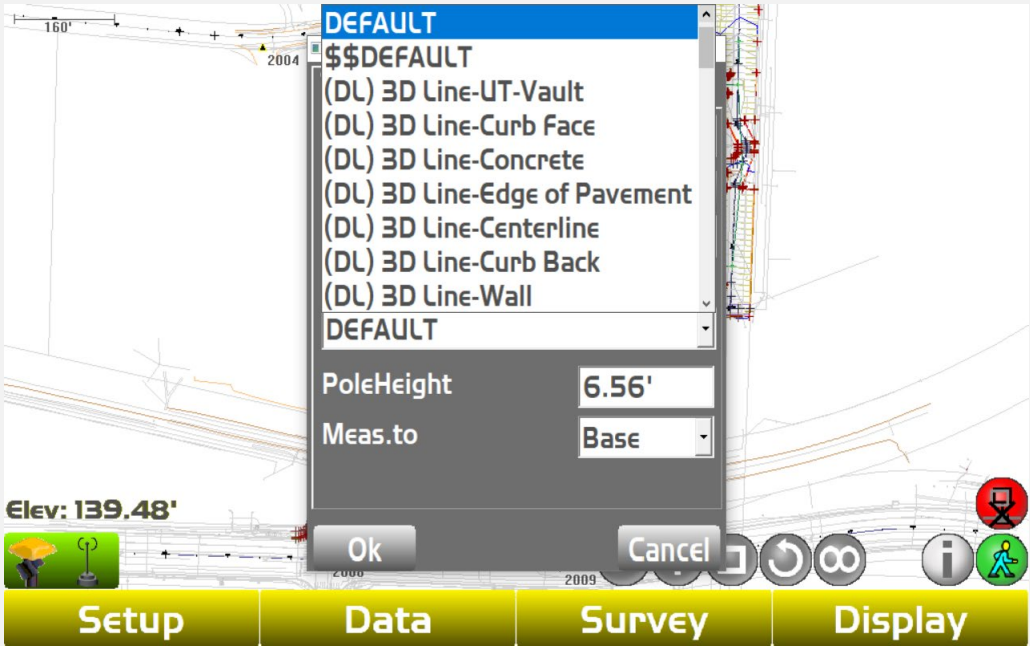
Select the Survey Tab
then click Measure pts



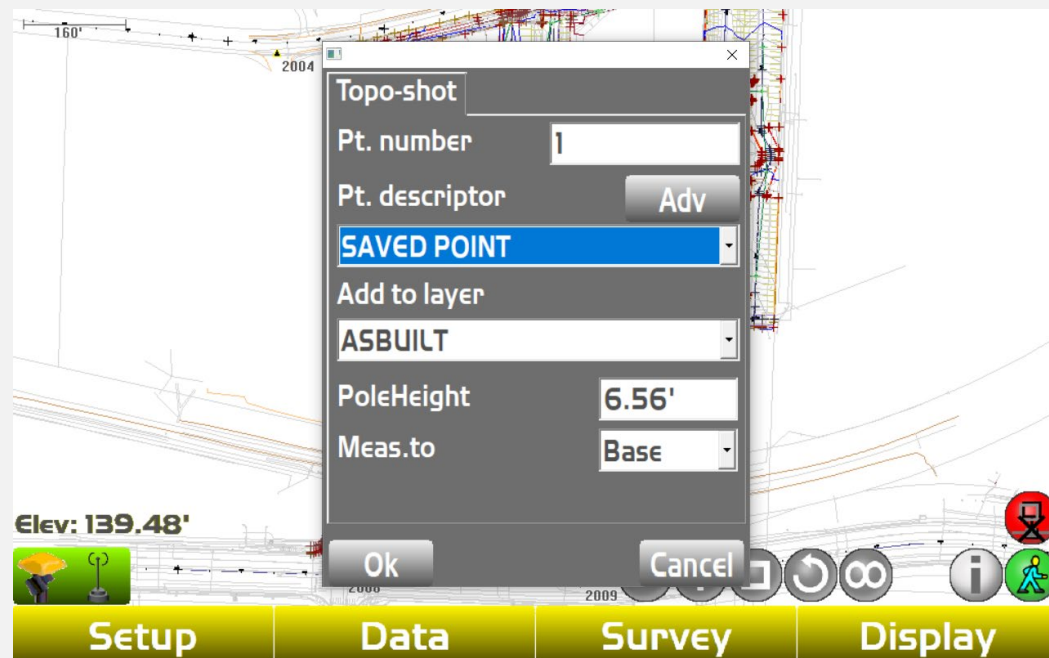
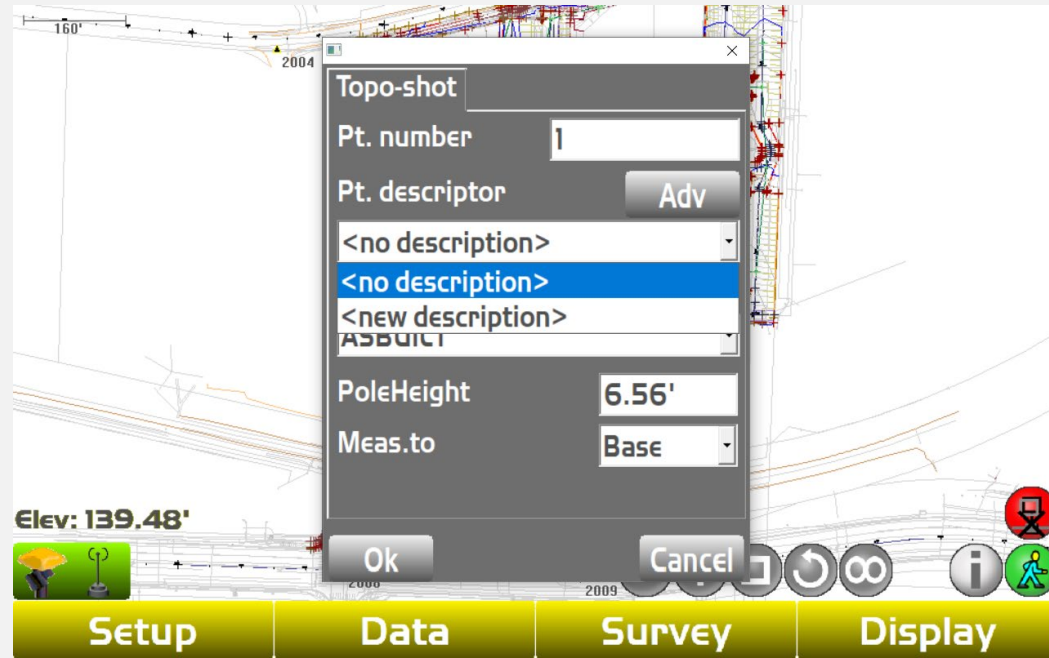
Click Topo-shot



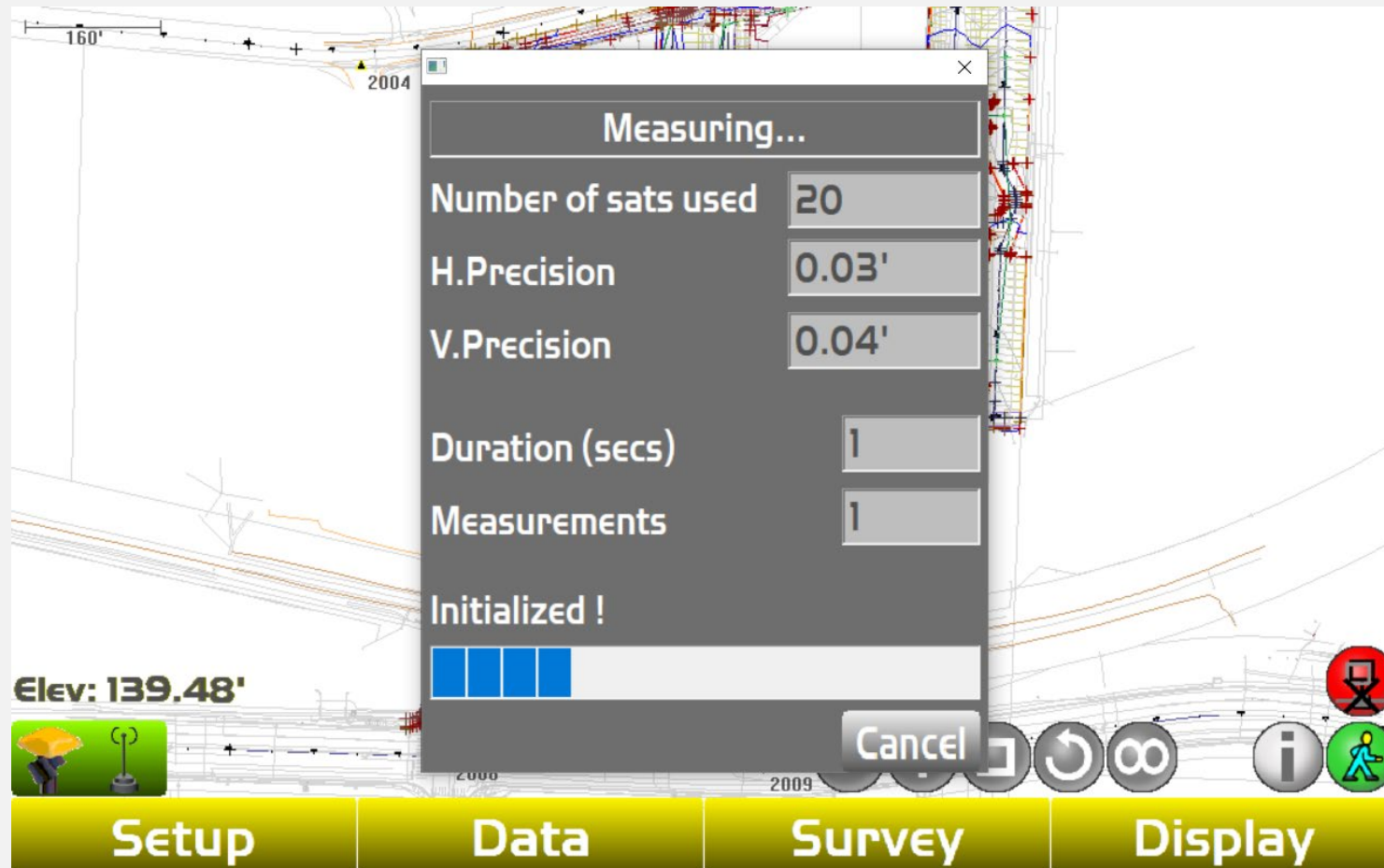
The next step is to select which layer to assign your point to. Click the drop-down button next to “add to layer”. You can either save it to an existing layer or create a new one



Next you will click the dropdown button under "Pt. descriptor". Scroll up to <new description> then title your saved point and click OK



Once you click OK your point will measure





Link to Training Videos:

<https://www.youtube.com/@northwestconstruction>